

Cambridge Healthtech Institute's Inaugural



Emerging Diagnostic

August 19, 2012

Hyatt Regency on Capitol Hill
Washington, DC

PARTNERING & INVESTMENT FORUM



LEARN about the latest tools, platforms and applications in molecular diagnostics

HEAR from innovative technology developers working in cancer, infectious disease and other therapeutic areas

DISCUSS strategies to leverage alliances and partnerships to bring diagnostics to market

NETWORK with early stage companies, established diagnostic and platform companies, clinical labs and investors

EXPLORE potential partnership opportunities through one-on-one meetings

MAXIMIZE your experience on site with Partner Direct networking software

Part of:

Next Generation Summit



8:00 am Registration

8:30 Chairperson's Welcome

8:35 Spotlight on Partnering with a Diagnostic Leader

Jason Coloma, Head, Global Program Office, Global Business Development, Diagnostics Division, Roche Diagnostics

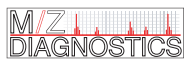
8:55 Emerging Company Presentations: Infectious Disease



Aviana is developing a unique biosensor based on adaptation of chips made for cellular communication, a technology believed to be capable of detecting specific infections within 20 minutes or less.



InstantLabs is focused on making PCR available at the point-of-care, offering quicker time to results with an easy to use and affordable device. Our first test will be for the detection of MRSA, allowing hospitals to quickly identify patients that are infected.



MZ Diagnostics' addresses the lack of a reliable rapid test to identify antimicrobial resistance among disease causing bacteria. We have developed a novel phenotypic assay to detect the production of bacterial enzymes that inactivate carbapenems conferring antimicrobial resistance.



Xagenic is commercializing a chip-based platform for molecular analysis with unprecedented sensitivity, speed and simplicity. Xagenic's technology is highly versatile and has been validated against a variety of cell and sample types.

9:55 Networking Coffee Break & Partner Direct Meetings

10:25 Spotlight on Partnering with Pharma

Yves Dubaquié, Ph.D., Director, BD&L, Novartis Molecular Diagnostics

10:45 Emerging Company Presentations: Cancer & Gene Detection



IVDiagnostics is focused on molecular diagnostics for blood borne diseases, with an initial field of interest is metastatic cancer. The IVDx system utilizes in vivo technology. We can scan one liter of a patient's blood without taking blood. Our molecular diagnostic platform uses aptamers applied to captured CTCs.



CTC characterization provides a real-time tumor biopsy that could be used to guide treatment decisions. Epic Science's CTC platform has been designed to find enough CTCs in enough patients and in a format that will facilitate downstream characterization.



AnalizaDx is developing a series of cancer diagnostics products focusing on structural changes to protein biomarkers using Solvent Interaction Analysis, a simple, cost effective, and proprietary technology for rapidly and effectively discovering changes to protein structure in complex heterogeneous matrices and biofluids.



GeneCentric has developed a molecular subtype assay that can be performed on routinely available formalin-fixed paraffin-embedded tissues and subdivides lung cancers into clinically relevant categories, enabling more informed, individualized treatment decisions.



Genomic Expression is using intelligent target filtering technology integrated with sequencing short reads on a small chip. Since all possible sequences are decoded, no assumptions need to be made about which ones will be informative, and samples of unknown sequence can be analyzed.



SpeedX develops gene detection technology for faster, simpler, and cheaper diagnosis of disease to positively impact humanity world-wide. Our key technologies including MNazymes, DNazymes and EzyAmp provide the basis for a suite of highly specific and cost-effective methods for analysis of biological materials.



AquaBioChip's technology integrates genomic information, isothermal amplification, simple optics for real time monitoring, microfluidics, and consumer electronics in a simplified package that works for many applications (genetic diagnostics related to clinical, food, water, and plant pathogens) under field conditions.

12:30 Lunch on Your Own

1:30 Chairperson's Remarks

Jonathan Cohen, President & CEO, 20/20 GeneSystems

1:35 PANEL DISCUSSION: Leveraging Strategic Alliances and Partnerships to Bring Diagnostics to the Market

Moderator: Katherine Tynan, Ph.D., Business Development & Strategic Consulting for Diagnostics Companies, Tynan Consulting LLC

2:20 Emerging Company Presentations: Novel Platforms



Adarza has developed a proprietary technology and product platform for biological detection that enables higher levels of differentiating analytical and workflow performance.

Arrayed Imaging Reflectometry offers a unique combination of sensitivity and highly multiplex detection on inexpensive microarray substrates.



Biocartis is engaged in the development of novel diagnostics platforms for low to highly multiplexed detection of molecular-based biomarkers. We are focused on the delivery of versatile and compact platforms that will make the testing of molecular diagnostics easier to perform in a wider range of healthcare settings.



iCubate has developed the arm-PCR (amplicon rescued multiplex PCR), a fully integrated system that performs DNA/ RNA extraction, amplification and detection, multiplexed, automated, and in a closed cassette. We integrated arm-PCR and PPI (polymerase preference index) algorithm into a software that is free to developers.

3:05 Networking Refreshment Break & Partner Direct Meetings

3:35 Spotlight on Partnering with Academic Medical Centers

Frances Toneguzzo, Ph.D., Executive Director, Research Ventures and Licensing, Partners HealthCare

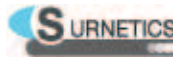
3:55 Emerging Company Presentations: Point-of-Care



MBio Diagnostics is developing a platform for comprehensive diagnosis at the point of care by integrating panels of measurements in an easy-to-use system for decentralized testing. Initial products are infectious disease panels. An elegantly simple biosensor enables highly sensitive multiplex rapid testing, with low cost to manufacture.



Daktari has developed novel microfluidic control systems that enable separation of target analytes without sample preparation. Users introduce a drop of blood, and the handheld instrument completes the assay. A novel electrochemical sensing method greatly simplifies target detection, eliminating the need for optics or optical reagents.



Surnetics is a start-up technology company focused on coating technology for improved fluid delivery, transfer, and analysis in microfluidic and other microscale and nanoscale devices, particularly for in-vitro diagnostics (IVD) in the point-of-care market.



EyeNetra consists of a clip-on eyepiece and software app for smart phones, and allows anyone to administer an eye test for nearsightedness, farsightedness and astigmatism, and transmit measurements to its cloud-based platform.

4:55 Networking Reception

The pace of innovation, both technically and in terms of commercialization strategies, continues to accelerate within the field of molecular diagnostics, making the right strategic partnerships critical to the development of promising new technologies and applications. CHI's **Emerging Diagnostic Partnering & Investment Forum** will bring together exciting early stage companies with decision makers representing pharma, larger biotechs, and VCs, providing an efficient opportunity to learn about emerging technologies and engage in networking, partnering and investment exploration discussions.

PROGRAM ADVISORY BOARD

Brian T. Edmonds, Ph.D., Director, New Technologies, Global External Research & Development, Lilly Corporate Center

Jorge Leon, Ph.D., President, Leomics Consulting

Daniel R. McClemon, McClemon LLC

Charlie Raffin, Consultant

David Rubin, Ph.D., Senior Director, Global Health Innovation Group, Merck & Co.

Ali Tinazli, Director, Business Development & Sales, BioSciences - North America, Sony DADC Austria AG

Katherine Tynan, Ph.D., Business Development & Strategic Consulting for Diagnostics Companies, Tynan Consulting LLC

Penny Wilson, Ph.D., Innovation Platform Leader, Stratified Medicine Technology Strategy Board

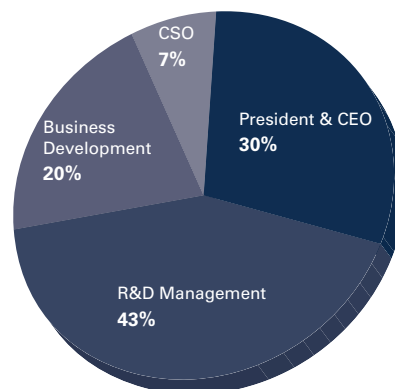


Partner Direct is a networking tool designed to facilitate collaboration amongst emerging companies and potential strategic partners. This partnering software provides the opportunity for our delegates to connect with company presenters in advance to schedule one-on-one meetings

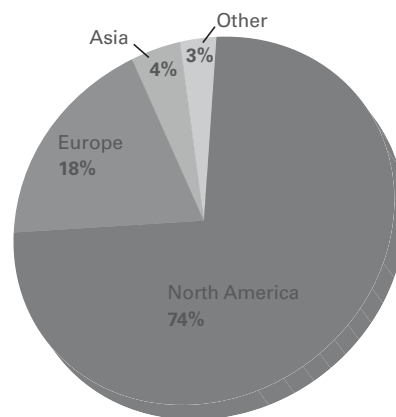
during the event. It is only available to registered attendees of the **Emerging Diagnostic Partnering & Investment Forum**, and is available before, during and after the event to allow you to make the most of your time on site.

DELEGATE PROFILE

Job Title



Region



** Based on Early Stage Molecular Diagnostics Partnering Forum 2012*

Hotel & Travel Information



CONFERENCE HOTEL:

The Hyatt Regency on Capitol Hill,
Washington, DC
400 New Jersey Avenue
Washington, DC 20001
Tel: 202-737-1234

Room Rate:
\$195 s/d
Reservation Cutoff:
July 20, 2012

Please visit our conference website to make your reservation online or call the Hotel directly to reserve your sleeping room accommodations. You will need to identify yourself as a Cambridge Healthtech Institute conference attendee to receive the discounted room rate. **Reservations made after the cut-off date or after the group room block has been filled (whichever comes first) will be accepted on a space- and rate-availability basis. Rooms are limited, so please book early.**

Visit NextGenerationDx.com for additional discounts on airfare and car rentals.

Sponsorship & Exhibit Opportunities

CHI offers comprehensive sponsorship packages which include exhibit space and branding, as well as the use of the pre- and post-show delegate lists. Customizable sponsorship packages allow you to achieve your objectives before, during, and long after the event. Signing on earlier will allow you to maximize exposure to hard-to-reach decision makers!

Contact me to help you customize your participation at this event!

Joseph Vacca
Manager, Business Development
781-972-5431
jvacca@healthtech.com

PRICING AND REGISTRATION INFORMATION

PARTNERING FORUM

(Includes access to Partnering Forum only)

Emerging Diagnostic Partnering and Investment Forum

Non-Attendee

\$1395

Conference Attendee

\$995

CONFERENCE PRICING

SUMMIT PRICING — BEST VALUE!

(Includes access to 2 conferences, excludes short courses)

Early Registration Discount until June 1, 2012

Commercial

\$2045

**Academic, Government,
Hospital-affiliated**

\$925

Advance Registration Discount until July 20, 2012

\$2195

\$995

Registrations after July 20, 2012, and on-site

\$2395

\$1045

SINGLE CONFERENCE

(Includes access to 1 conference, excludes short courses)

Early Registration Discount until June 1, 2012

\$1425

\$575

Advance Registration Discount until July 20, 2012

\$1565

\$645

Registrations after July 20, 2012, and on-site

\$1775

\$725

August 21-22	August 22-23
Enabling Point-of-Care Diagnostics	Molecular Diagnostics for Infectious Disease
Emerging Molecular Markers of Cancer	Companion Diagnostics
Mass Spectrometry in Diagnostics of Infectious Disease	Commercialization of Molecular Diagnostics
Regulatory Compliance in Drug-Diagnostic Co-Development	

SHORT COURSES

(Includes access to short courses only)

One short course

Commercial

\$695

**Academic, Government,
Hospital-affiliated**

\$395

Two short courses

\$995

\$695

Three short courses

\$1195

\$795

Monday, August 20 th – Morning	Monday, August 20 th – Afternoon	Wednesday, August 22 nd – Dinner
SC1 Micro- and Nanofluidics in Diagnostics and Life Sciences	SC5 Applications of Detection Theory in Diagnostics	SC9 The Future of Point-of-Care Diagnostics
SC2 Smarter Studies: Boosting Omics and Biomarker Projects through an Efficient and Rigorous Study Design	SC6 Next Generation Sequencing as a Diagnostics Platform	SC10 Deal Making in Companion Diagnostics
SC3 Differentiating Lateral Flow Products from the Competition Based on Performance and Design	SC7 Introducing Mass Spectrometry into a Clinical Laboratory	
SC4 Latest Advances in Molecular Pathology	SC8 Improving Cardiovascular Biomarkers: Clinical Impact and Crossover Applications	

CONFERENCE DISCOUNTS

Poster Submission-Discount (\$50 Off)

Poster abstracts are due by July 20, 2012. Once your registration has been fully processed, we will send an email containing a unique link allowing you to submit your poster abstract. If you do not receive your link within 5 business days, please contact jring@healthtech.com.

*CHI reserves the right to publish your poster title and abstract in various marketing materials and products.

REGISTER 3 - 4th IS FREE: Individuals must register for the same conference or conference combination and submit completed registration form together for discount to apply.

Additional discounts are available for multiple attendees from the same organization. For more information on group rates contact David Cunningham at +1-781-972-5472

How to Register: NextGenerationDx.com/Dx-Partnering

reg@healthtech.com • P: 781.972.5400 or Toll-free in the U.S. 888.999.6288

Please refer to the Registration Code below:



Receive a FREE eNewsletter by signing up at chimedialogroup.com

Weekly Update

The latest industry news, commentary and highlights from Bio-IT World

eCliniqua

Innovative management in clinical trials



A series of diverse reports designed to keep life science professionals informed of the salient trends in pharmaceutical technology, business, clinical development, and therapeutic disease markets. For a detailed list of reports, visit InsightPharmaReports.com, or contact Rose LaRaia, rlaraia@healthtech.com, +1-781-972-5444.



Barnett is a recognized leader in clinical education, training, and reference guides for life science professionals involved in the drug development process. For more information, visit barnettinternational.com.

ADDITIONAL REGISTRATION DETAILS

Each registration includes all conference sessions, posters and exhibits, food functions, and access to the conference proceedings link.

Handicapped Equal Access: In accordance with the ADA, Cambridge Healthtech Institute is pleased to arrange special accommodations for attendees with special needs. All requests for such assistance must be submitted in writing to CHI at least 30 days prior to the start of the meeting.

To view our Substitutions/ Cancellations Policy, go to <http://www.healthtech.com/regdetails>

Video and/or audio recording of any kind is prohibited onsite at all CHI events.

If you are unable to attend but would like to purchase the Next Generation Dx Summit CD for \$750 (plus shipping), please visit NextGenerationDx.com. Massachusetts delivery will include sales tax.

Please use
keycode **MDB F**
when registering!